

Census 2021: initial results

Dan Chedzoy,
Performance and Business Intelligence
Policy, Performance and Communications

census
2021



Census Day – 21 March 2021

- Covid-19 restrictions still applied
- ‘Stay at home rule’ and limits on number of people allowed to meet outdoors in place until 29 March
- Hospitality venues allowed to serve drinks and non-essential retail re-opened 12 April
- Coronavirus Job Retention Scheme [‘furlough’] stepped down 1 July
- Higher Education students at English universities on practical courses could return from 8 March.
- Census 2021 was **digital first**
- Response rate of 96% (compared with 91% for Sheffield in 2011 and 97% nationally)

Phase 1: Topic Summaries (late 2022-early 2023)

1. Demography and migration
2. UK armed forces veterans
3. Ethnic group, national identity, language and religion
4. Welsh language skills
5. Labour market and travel to work
6. Housing
7. Sexual orientation and gender identity
8. Education
9. Health, disability and unpaid care (19/01/23)

Phases 2 and 3

Phase 2: from early 2023

Start of the Census 2021 analysis programme: all Census 2021 data releases will be published with statistical commentary.

Multivariate data for the usual resident population base (e.g. employment by ethnicity)

Phase 3: from spring 2023

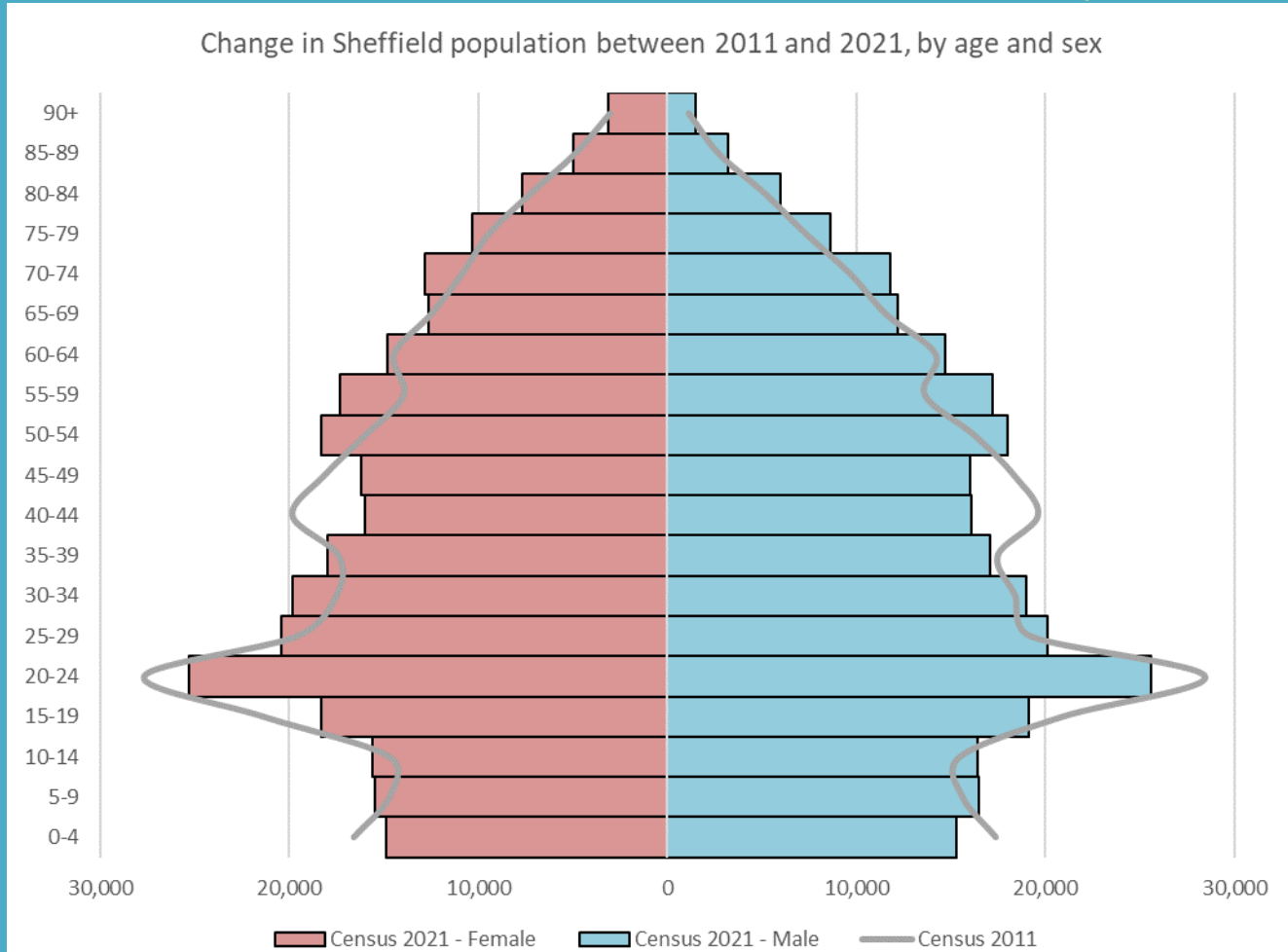
Alternative population bases: the different geographical locations where individuals could have been counted for Census 2021.

Small populations

Detailed migration data

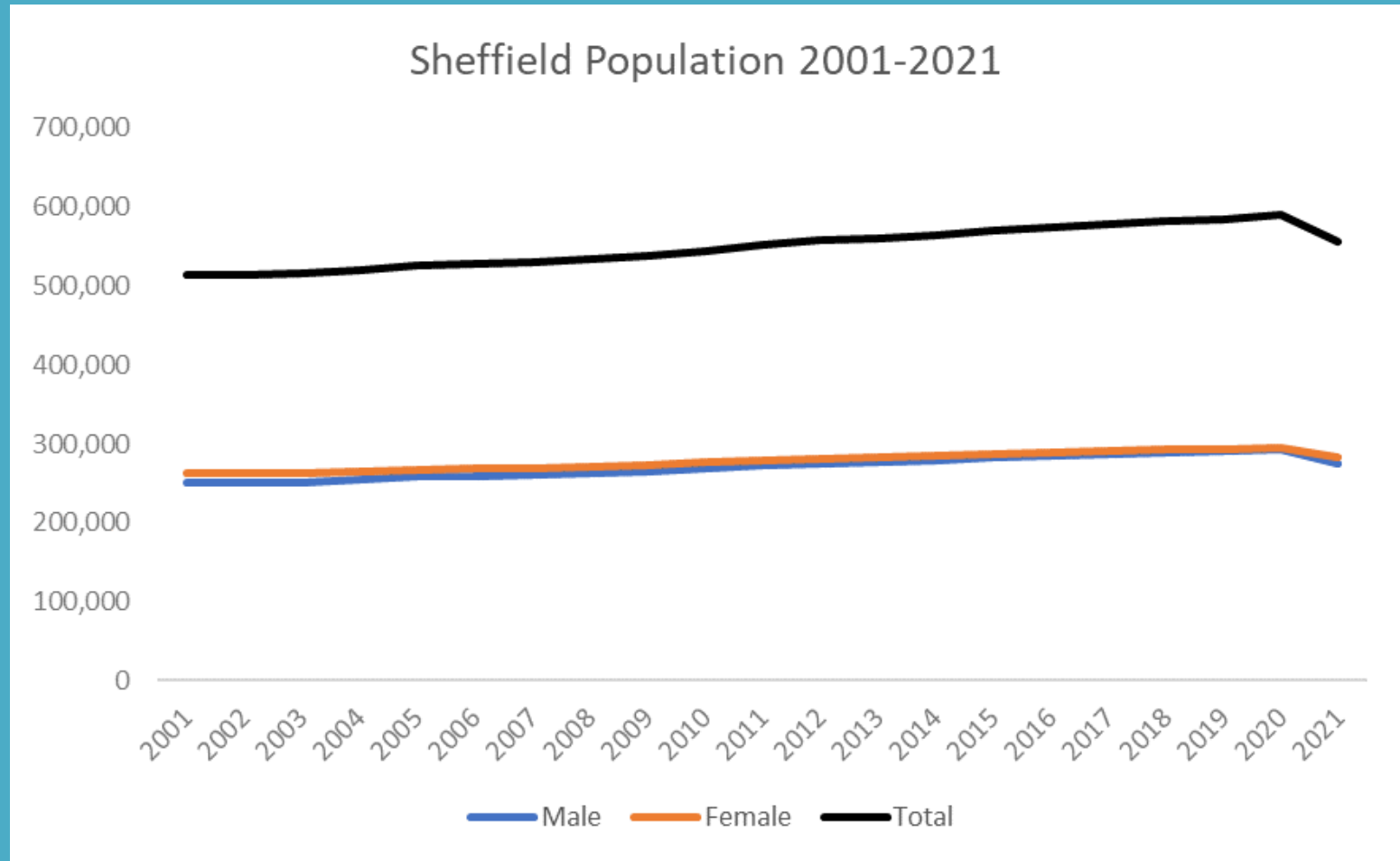
Sheffield Population

2021 Census: 556,521; increase of 0.7% from 2011 (552,698)



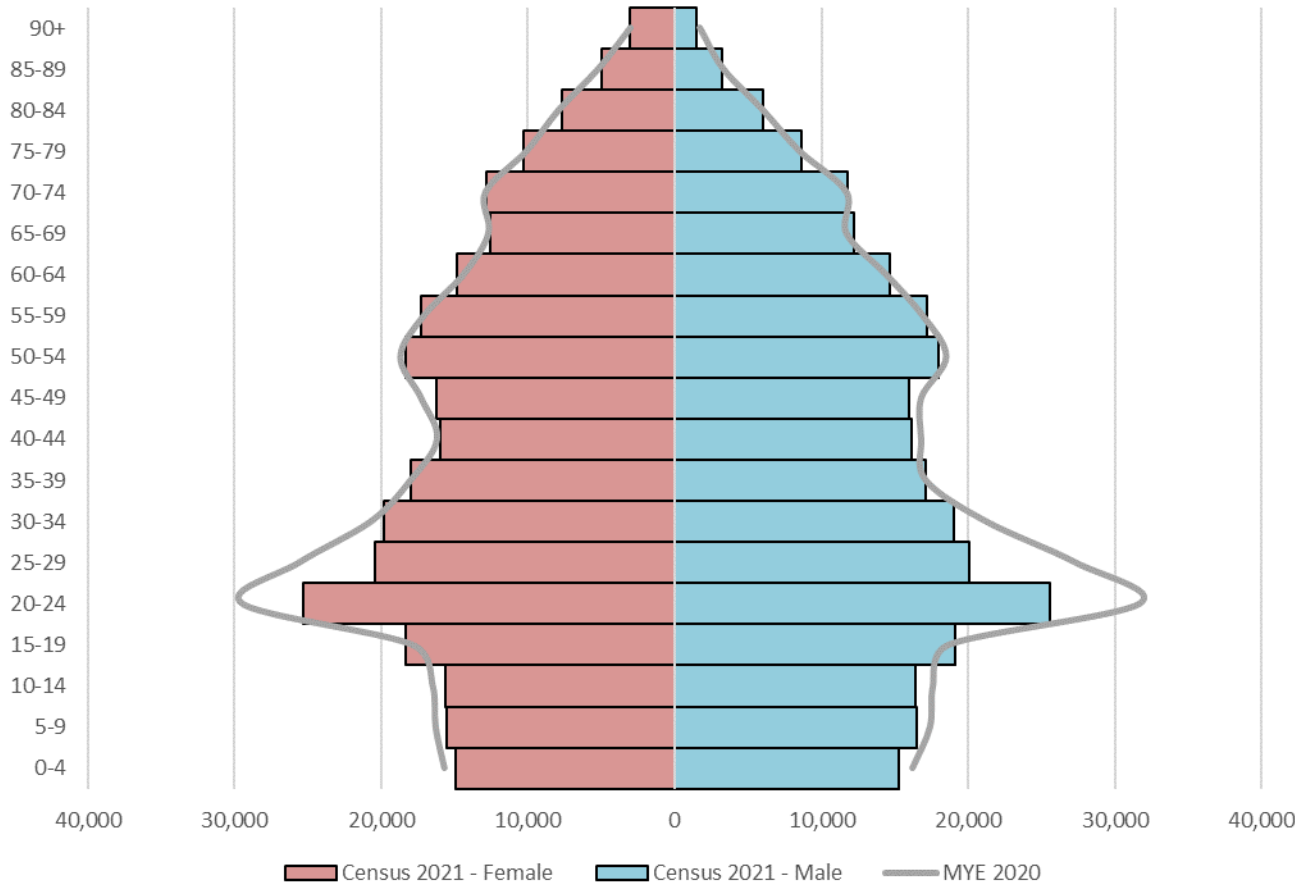
Sheffield Population

2020 mid-year estimate: 589,214 (decrease of 5.6%)



'Missing' Population?

Census 2021 and 2020 mid-year population estimates



Compared with 2020 mid-year estimates, Census 2021 data shows fewer young adults, with other age groups broadly similar

Ward Level Data

Population increased since 2011

Ward	Change since 2011	Change since 2020 MYE
City	15.5%	-28.6%
Darnall	9.6%	2.8%
Nether Edge and Sharrow	7.1%	-1.8%
Firth Park	4.7%	4.8%
Southey	3.6%	1.0%
Manor Castle	3.5%	-14.1%
Dore and Totley	3.1%	0.7%
Ecclesall	2.8%	3.9%
Woodhouse	2.3%	1.4%
Graves Park	2.0%	4.5%
Stannington	2.0%	-1.0%
Burngreave	1.6%	-13.3%
Park and Arbourthorne	1.2%	-2.3%
Shiregreen and Brightside	1.0%	-6.0%
Beauchief and Greenhill	0.5%	-0.2%

Population decreased since 2011

Ward	Change since 2011	Change since 2020 MYE
Stocksbridge and Upper Don	-0.2%	2.3%
Richmond	-0.9%	1.4%
Mosborough	-1.4%	5.5%
Gleadless Valley	-1.4%	-7.4%
East Ecclesfield	-1.4%	0.1%
Birley	-1.6%	-1.9%
Hillsborough	-1.7%	0.7%
West Ecclesfield	-2.2%	1.9%
Crookes and Crosspool	-4.2%	-2.7%
Fulwood	-5.1%	-11.0%
Broomhill and Sharrow Vale	-5.2%	-11.1%
Beighton	-5.2%	-6.3%
Walkley	-7.8%	-28.2%

Demography and Migration

- 96.3% of people in Sheffield lived in a household, and 3.7% lived in a communal establishment (compared with 2.5% in 2011).
- The number of households in Sheffield increased from 229,928 in 2011 to 231,950 in 2021. There has been a slight increase in the proportion of people living in one person households.
- The percentage of people in Sheffield aged 16+ who were single (never married and never registered a civil partnership) increased from 41.2% in 2011 to 44.2% in 2021. 39.7% are married or in a civil partnership with a person of the opposite sex, and 0.4% with a person of the same sex.
- 85.0% of people in Sheffield were born in the UK; 7.3% of people arrived between 2011 and 2021.

Armed Forces Veterans

- 2.9% of Sheffield people aged 16+ had previously served in UK armed forces, compared with 4.2% in Yorkshire and Humber and 3.8% for England.
- Of the people that have served in the armed forces, 70.7% had served in the regular armed forces, 25.4% had served in the reserved armed forces, and 3.9% had served in both the regular and reserved armed forces.

Ethnicity

- The broad ethnic groups with the largest increases between 2011 and 2021 were:
 - “White: Other White” (+7,513; 2.3% to 3.6% of population)
 - “Black, Black British, Black Welsh, Caribbean or African: African” (+6,694; 2.1% to 3.3%)
 - “Asian, Asian British or Asian Welsh: Pakistani” (+5,681; 4.0% to 5.0%)
- The number of people in the “White: English, Welsh, Scottish, Northern Irish or British” ethnic group fell by 32,139, from 80.8% to 74.5%
- Census 2021 was the first census to collect “White: Roma” as a specific ethnic group, with 0.4% of people in Sheffield identifying themselves as White Roma.

Ethnicity

- The largest of the detailed ethnic groups are shown below:

Detailed Ethnic Group	Observation	Percentage
White: English, Welsh, Scottish, Northern Irish or British	414676	74.5%
Asian, Asian British or Asian Welsh: Pakistani or British Pakistani	27671	5.0%
Other ethnic group: Arab	8956	1.6%
Mixed or Multiple ethnic groups: White and Black Caribbean	7524	1.4%
Black, Black British, Black Welsh of African background: African unspecified	7468	1.3%
Asian, Asian British or Asian Welsh: Chinese	7393	1.3%
Asian, Asian British or Asian Welsh: Indian or British Indian	6798	1.2%

Religion

- The question on religion was voluntary, with the most common response for people in Sheffield being 'no religion'; the proportion of people increased to 43.4% in 2021, from 31.2% in 2011.
- There was a fall in the number of people who identified as Christian from 52.5% to 38.5%.
- The number of people who identified as Muslim increased from 7.7% to 10.3%.
- All other religions or religious groups were below 1.0%

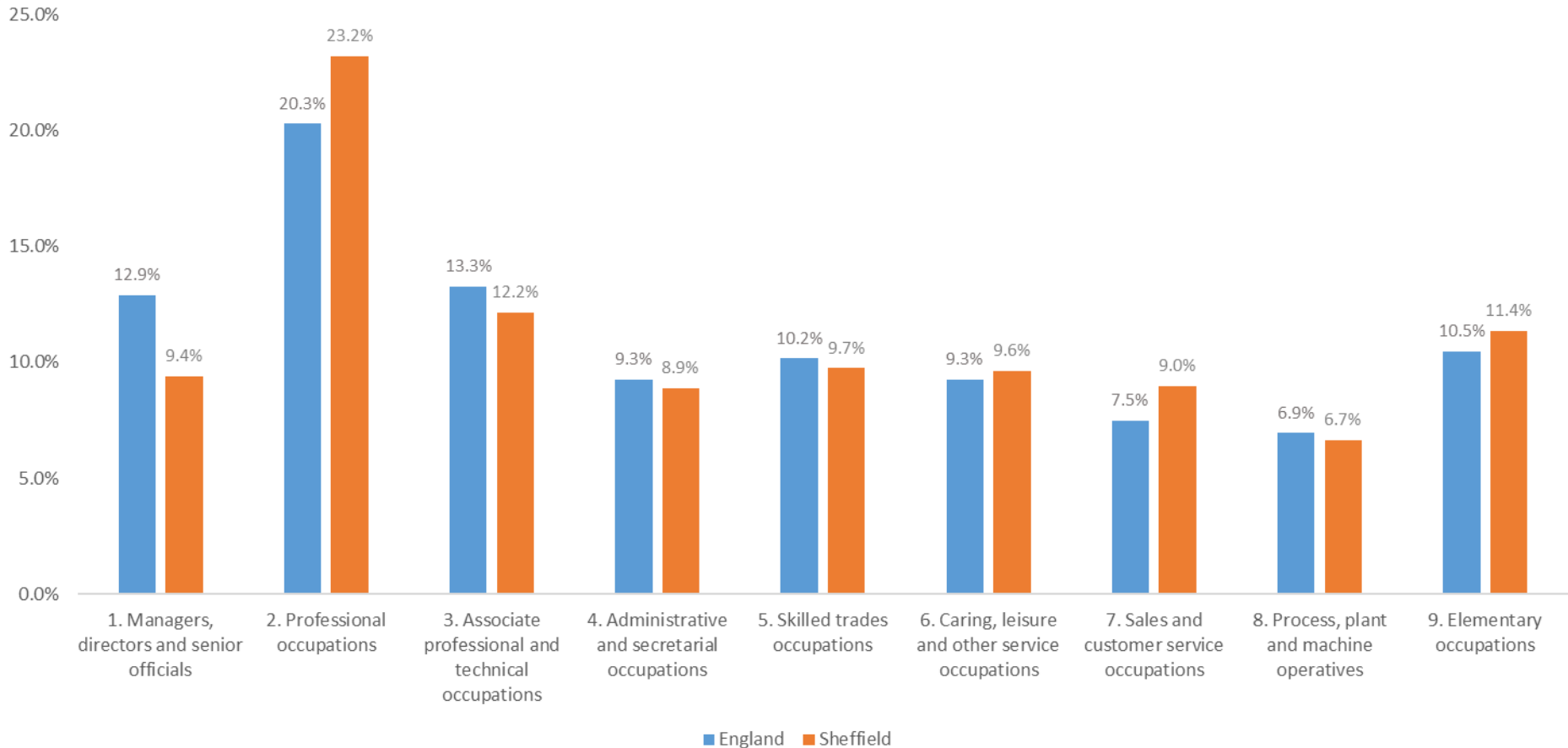
Language

- 91.2% of people in Sheffield spoke English as their main language, compared with 92.6% in 2011.
- 1.8% of people spoke a South Asian language as their main language, with the most common being Urdu.
- There has been a slight fall in the percentage of people speaking the three most commonly spoken South Asian languages – Urdu, Panjabi, and Bengali – as their main language.
- The most commonly spoken European languages were Slovak, Polish, and Romanian,

Labour Market and Travel to Work

- The Covid-19 pandemic, the national lockdown, associated guidance and furlough measures will have affected the labour market topic more than most others. Therefore, care should be taken when using these data for planning and policy purposes.
- On 2021 Census Day, 53.0% of usual residents who were economically active were in employment; a decrease from 54.3% in 2011.
- 4.0% of people aged 16 years and over (including full-time students) were unemployed.
- 28.8% of people who were in work worked mainly at or from home.
- 45.2% travelled less than 10km to work, and 12.5% travelled 10km or over to work. 13.4% had other forms of travel to work

Labour Market: Occupation Categories



Housing

- While the proportion of households who own their own homes outright has increased, the proportion who own their homes through a mortgage or shared ownership has fallen
- The proportion of households living in social rented homes has fallen, while the proportion in private rented homes has increased.

Tenure Type	2021	2011	Change
Owned: Owns outright	31.0%	27.1%	3.9%
Owned: Owns with a mortgage or loan or shared ownership	27.6%	31.6%	-4.0%
Rented: Social rented	22.6%	24.8%	-2.2%
Private rented or lives rent free	18.8%	16.5%	2.3%

Housing

- The proportion of households that were houses increased from 78.5% in 2011 to 79.0%, while the proportion that were in a purpose built block of flats fell from 18.5% to 17.6%
- 1.4% of households did not have central heating. 79.2% of households had central heating that used mains gas, and 7.3% used electric.
- Significantly more houses are under-occupied than are over-occupied, however 3.2% of houses have an occupancy rating of -1 bedrooms and 0.6% have an occupancy rating of -2 bedrooms.
- 29.3% of households did not have a car or van, compared with 33.0% in 2011. This compares to 23.3% for England and Wales.

Gender Identity and Sexual Orientation

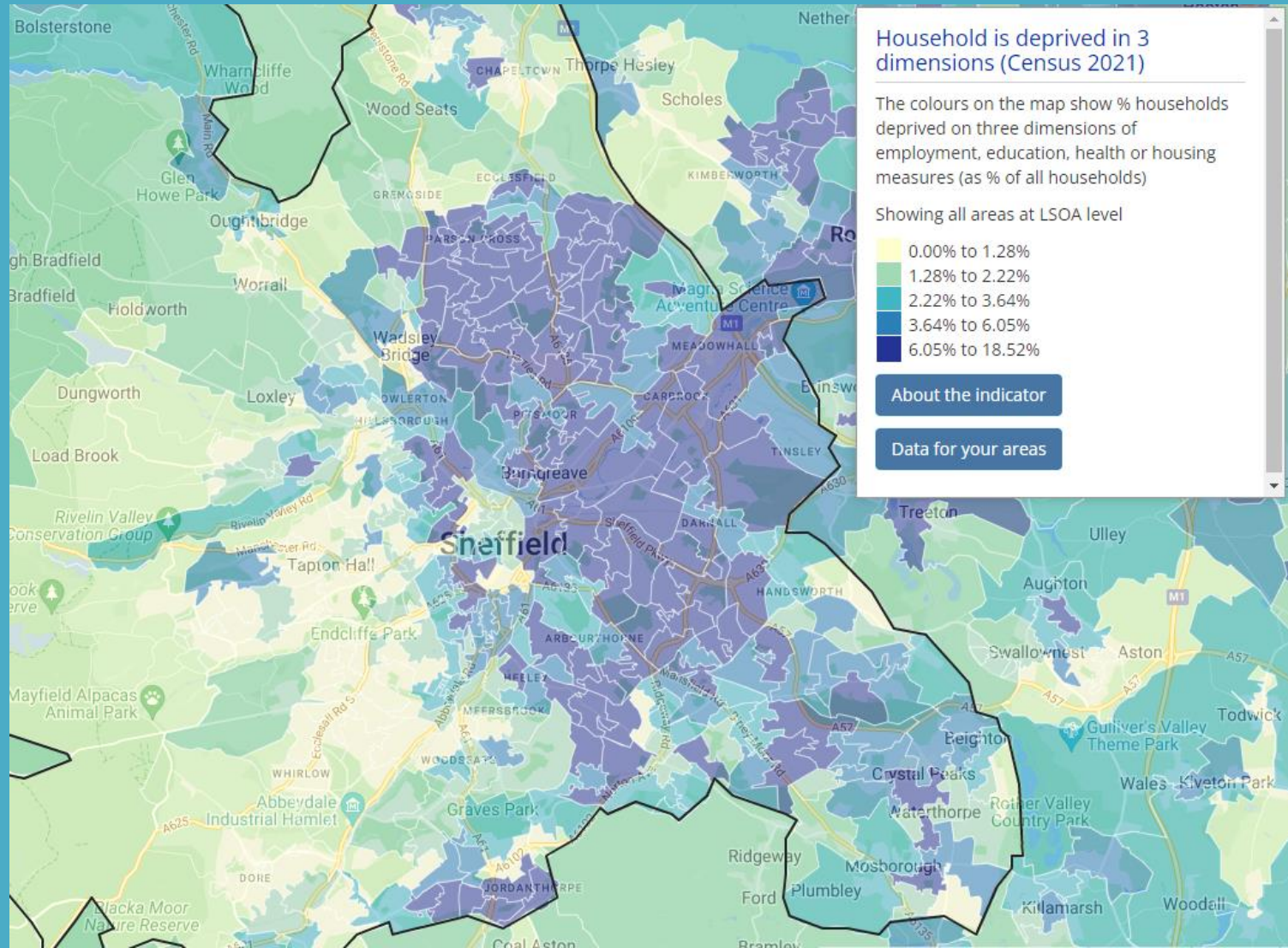
- Sexual orientation was an optional question in Census 2021 for people aged 16+.
- Of the people who chose to answer the question, 95.52% identified as straight/heterosexual, and 4.48% identified as LGBTQ+.
- The question on gender identity was also optional.
- 99.19% of the people who answered the question had a gender identity the same as the sex they were registered with at birth.

Education

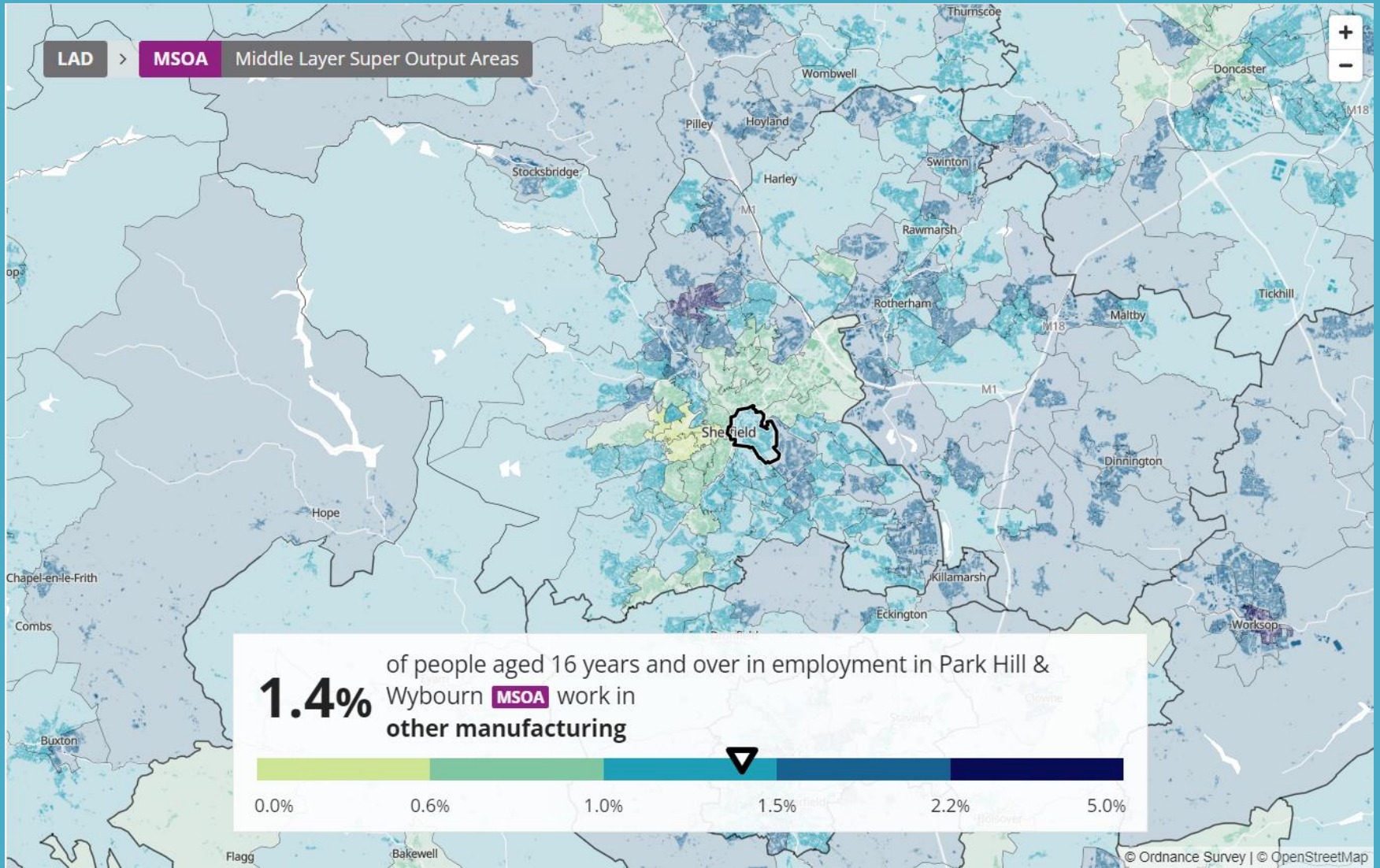
- In 2021, 24.9% of people aged 5+ in Sheffield were in full-time education (compared 20.4% for England)
- Between 2011 and 2021, there was a notable fall in the proportion of people aged 16+ with no qualifications, and an increase in the proportion with a qualification at Level 4 or higher

Highest level of qualification	2021	2011	Change
No qualifications	19.4%	24.3%	-4.9%
Level 1 qualifications	9.1%	12.3%	-3.2%
Level 2 qualifications	11.7%	13.7%	-2.0%
Apprenticeship	5.4%	3.6%	1.9%
Level 3 qualifications	18.6%	15.8%	2.7%
Level 4 qualifications and above	33.4%	25.7%	7.7%
Other qualifications	2.4%	4.6%	-2.2%

Sheffield Local Insight (<https://sheffield.communityinsight.org>)



ONS Census Maps



Accessing Census Data

Topic Summaries will be added to the Sheffield City Council website in the near future

The data can be explored at Sheffield Local Insight:

<https://sheffield.communityinsight.org/>

and ONS Census Maps:

<https://www.ons.gov.uk/census/maps>

ONS have produced semi-automated summary reports for each local authority:

<https://www.ons.gov.uk/visualisations/censusareachanges/E08000019/>