

# TRANSPORT

## Strategy

June 2018



Sheffield



# FOREWORD



**Cllr Jack Scott,**  
Cabinet Member for Transport  
and Development

We have a vision for Sheffield to be the fairest city in the country. Good transport for all plays a vital part in achieving that. Because the overwhelming majority of trips are made by private motor car we have too much pollution and congestion.

Changing that equation so that we have a city that functions better economically, environmentally and in equality terms is what Sheffield's new Transport Strategy is about.

Getting this right for Sheffield and building the great transport system our city needs is a huge prize. It will not be easy. But it will be worth it.

## OUR TRANSPORT VISION FOR SHEFFIELD

Imagine a Sheffield where everyone can access opportunities and services without transport or mobility constraints. Residents, businesses and visitors in our thriving city can safely move themselves and their goods or products with confidence and without delay. The negative impacts of transport, including air quality and noise are minimised and safety and quality of life is improved in the city as a result.

**Reliable and clean journeys for everyone in a flourishing Sheffield.**

# TRANSPORT THAT DELIVERS FOR SHEFFIELD



Sheffield is a city undergoing significant change and growth. Our new Transport Strategy is about how we deliver transport that fits with these trends and works for all as we prepare for the arrival of HS2 in 2034.

We sit at the heart of the Sheffield City Region (SCR) and our city centre has the largest concentration of jobs and the greatest capacity for future employment growth. With Rotherham, we share the Advanced Manufacturing Innovation District, a concentration of highly skilled jobs and a key driver of the local economy.

Transport connects people to opportunities and services, enables the delivery of goods and services and helps people to do business efficiently. It contributes significantly to the

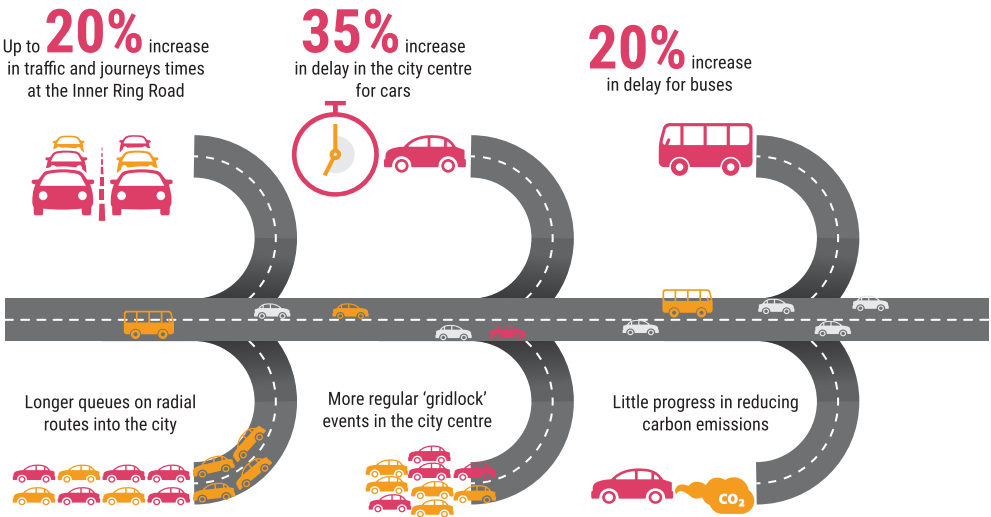
sustainability agenda whether improving air quality, reducing our carbon footprint or improving network resilience.

Major investment will be necessary to unlock development opportunities without further overloading our highway network. We will create headroom for growth by embracing the opportunity to shift a significant number of trips toward the most space efficient and cleaner modes of transport.

We can reduce the negative impacts of transport, improve safety and enhance the quality of life by prioritising

- Public transport which is integrated, faster and user friendly
- Better, safer active travel options
- Protecting the fast, reliable movement of traffic between the city and other economic centres.

# Impact of development without better transport



Potential development can be constrained by poor transport infrastructure resulting in access and connectivity issues

## Our new approaches

To ensure that we have an inclusive transport system that improves access to jobs, services and opportunities, we will support better regional road and rail connectivity and improve our local networks to maximise the benefits. This also means a better walking, cycling and public transport offer for the city.

To underpin sustainable growth, we will enable better use of the highway network by speeding up journeys for space efficient modes, especially for shorter trips.

We will develop our transport system to complement and enhance the urban and rural fabric of the city. It is essential to safeguard walking and cycling and to integrate and simplify public transport so that these modes are more competitive with the car in terms of journey times and convenience. This will lead to improved health and well-being, reduce our carbon footprint and reduce the impact of air and noise pollution – as well as enabling more movement within the constraints of the city.

We will support the development of transport technologies that work towards fully integrated and inclusive transport. We will adopt technology solutions that remove or reduce the need to travel and reduce the negative impacts of transport.

National & regional connectivity	City region connectivity	Local connectivity	Cross-cutting
<b>Railways &amp; motorways</b> <p>Lobby for additional and faster rail services, in particular to Leeds and Manchester</p> <p>Support High Speed 2 and deliver station and growth masterplans</p> <p>Provide new Sheffield - Rotherham road link to avoid M1</p> <p>Support and provide highway improvements to Trans-Pennine Tunnel</p>	<b>Trams, trains and Major Road Network</b> <p>Secure Supertram as part of an expanded City Public Transport Partnership</p> <p>Develop new high speed mass transit corridors with park &amp; ride</p> <p>Highway improvements on Inner Ring Road, and between Upper and Lower Don Valley</p>	<b>Buses and bikes</b> <p>Programme to improve public realm and permeability and accessibility of city centre</p> <p>Review of arrangements for buses in the city centre, including reviewing the future of Pond Street Interchange</p> <p><u>Additional bus priority</u></p> <p>Review of bus operating model</p> <p>Improved cycling infrastructure prioritised in city centre and areas with greatest potential to reduce car trips</p>	<b>Across the city</b> <p>Implement findings of Clean Air Zone feasibility strategy</p> <p>Develop and enact roadmap to decarbonisation of motorised transport</p> <p>Review relevant Council processes to align with strategy</p> <p><u>Investigate a Workplace Parking Levy</u></p> <p>Investigate other demand management measures, including a city centre congestion charge</p> <p>Produce and maintain register of threats and opportunities provided by change</p>



The Transport Strategy is a blueprint for action that will help to address the entrenched transport issues that face Sheffield today



## Delivering for Sheffield: from Vision to Action

The Transport Strategy has been informed by an evidence base that has analysed current challenges, opportunities, strengths and weaknesses and also taken into account public feedback from the recent consultation on the Transport Vision. From that consultation we added to our knowledge about journey needs and local opinions on travel. The Strategy incorporates this knowledge as well as evidence from many local, national and international sources.

The Strategy will inform the development of a long-term Action Plan, which will start to identify a multi-million pound programme of transport investment and where this investment is most urgently needed. After the Strategy comes delivery. When funding becomes available, transport programmes of schemes will be carried out across the city following local consultations. As Sheffield evolves so will its transport to better support the city's needs.



## The Strategy in summary

### A city that's easier to get around



Faster, better integrated and simpler bus services



Securing the future of Supertram and supporting its expansion



New mass transit routes and services creating more public transport capacity for a growing city



An inner ring road that has more capacity and is easier to cross into the city centre

### A better connected Sheffield



Faster, longer and more frequent train services to other cities and to the rest of the city region



A transformed Sheffield Station bringing High Speed rail services into the heart of city

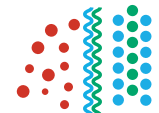


Improved major road network, keeping Sheffield connected to motorways, airports, and other cities

### A safer and more sustainable Sheffield



Sustainable safety, safe walking and cycling as standard



Improved air quality and working to manage congestion



Improving poor health and poor access to jobs and services

## Getting in touch

Sheffield's Transport Strategy takes an evidence based approach to determining our future proposals. It builds upon the Transport Vision that was widely consulted upon at the start of 2018.

We'd like to hear any additional evidence that should be included as we move towards developing the schemes which will help deliver on these principles.

The Transport Strategy is available at [democracy.sheffield.gov.uk](http://democracy.sheffield.gov.uk) – under 'meeting Cabinet 18 July 2018'

You can contact us with your comments – in particular pointing out evidence we should consider – via

Email: [transportstrategy@sheffield.gov.uk](mailto:transportstrategy@sheffield.gov.uk)

Deadline: 25 January, 2019.

We will not respond to individual submissions but we will take them into account as we move to final adoption of the Strategy.

---

If you need this document in an alternative format

Tel: 0114 273 4567

Email: [transportstrategy@sheffield.gov.uk](mailto:transportstrategy@sheffield.gov.uk)

**Sheffield**



**wsp**